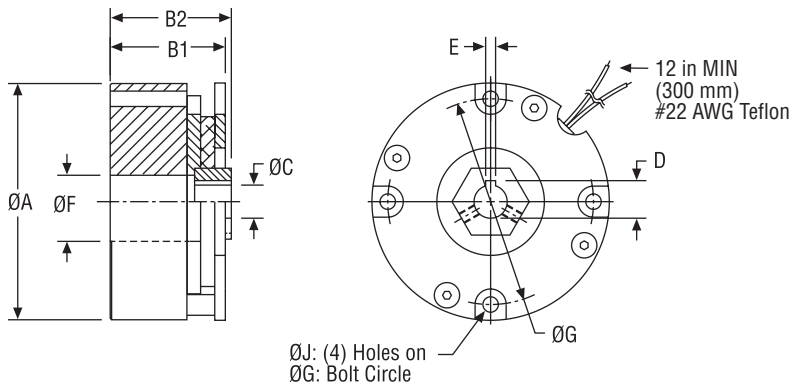




BRP-23, 26, 28 Brakes

Dimensions & Specifications



BRP Model Shown

Dimensions (mm)

Mounting requirements see page 144.

DIMENSIONS										
Model*	Static Torque lb-in (Nm)	A: OD in (mm)	B1: OAL Short Hub in (mm)	B2: OAL Long Hub in (mm)	C: Hub ID Ø in (mm)	D: Keyway Height in (mm)	E: Keyway Width in (mm)	F: Case ID Ø in (mm)	G: Mtg Hole BC Ø in (mm)	J: (4) Mtg Holes in (mm)
BRP-23U24-E05X	30 (3.4)	2.36 (60)	1.40 (35.6)	1.65 (41.9)	.312 (7.9)	.364 (9.2)	.094 (2.4)	.79 (20.0)	2.05 (52.1)	.177 (4.5)
BRP-23U24-E06X	30 (3.4)	2.36 (60)	1.40 (35.6)	1.65 (41.9)	.375 (9.5)	.425 (10.8)	.094 (2.4)	.79 (20.0)	2.05 (52.1)	.177 (4.5)
BRP-23U24-E08X	30 (3.4)	2.36 (60)	1.40 (35.6)	1.65 (41.9)	.500 (12.7)	.564 (14.3)	.125 (3.2)	.79 (20.0)	2.05 (52.1)	.177 (4.5)
BRP-23U24-E10X	30 (3.4)	2.36 (60)	1.40 (35.6)	1.65 (41.9)	.625 (15.9)	.709 (18.0)	.188 (4.8)	.79 (20.0)	2.05 (52.1)	.177 (4.5)
BRP-26U24-E06X	35 (4.0)	2.87 (72.9)	1.22 (31.0)	1.45 (36.8)	.375 (9.5)	.425 (10.8)	.094 (2.4)	0.63 (16.0)	2.50 (63.5)	.177 (4.5)
BRP-26U24-E08X	35 (4.0)	2.87 (72.9)	1.22 (31.0)	1.45 (36.8)	.500 (12.7)	.564 (14.3)	.125 (3.2)	0.63 (16.0)	2.50 (63.5)	.177 (4.5)
BRP-28U24-E06X	60 (6.8)	3.03 (77)	1.22 (31.0)	1.45 (36.8)	.375 (9.5)	.425 (10.8)	.094 (2.4)	1.18 (30.0)	2.76 (70.0)	.177 (4.5)
BRP-28U24-E08X	60 (6.8)	3.03 (77)	1.22 (31.0)	1.45 (36.8)	.500 (12.7)	.564 (14.3)	.125 (3.2)	1.18 (30.0)	2.76 (70.0)	.177 (4.5)
BRP-28U24-E10X	60 (6.8)	3.03 (77)	1.22 (31.0)	1.45 (36.8)	.625 (15.9)	.709 (18.0)	.188 (4.8)	1.18 (30.0)	2.76 (70.0)	.177 (4.5)

PERFORMANCE										
Model	Static Torque lb-in (Nm)	Coil Voltage VDC	Resistance Ohms nom.	Power Watts max	Armature Engagement msec	Armature Disengagement msec	Armature Inertia lb-in-sec ²	Rotor Inertia lb-in-sec ²	Weight lb (kg)	Energy Dissipation ft-lb/min
BRP-23	30 (3.4)	24/90	46.5/700	13.0	70.0	20.0	NA	1.77×10^{-5}	1.1 (0.5)	1200
BRP-26	35 (4.0)	24/90	33/506	19.0	80.0	20.0	NA	1.14×10^{-4}	1.2 (0.5)	1400
BRP-28	60 (6.8)	24/90	36/440	20.0	50.0	40.0	NA	1.06×10^{-4}	1.8 (0.8)	1800

*See "How to order" model numbering system on page 116 for power-off brakes.

X = Upon ordering, choose L or S for long or short hub length.

(-) denotes metric equivalents. Specifications subject to change without notice.

General Notes

- Customer shall maintain the perpendicularity of the case assembly mounting surface with respect to the shaft within .003 T.I.R. at the diameter of the bolt circle.
- Other voltages available upon request.
- Customer shall maintain concentricity of case assembly mounting pilot with respect to the shaft within .003 T.I.R.
- All BRP series brakes are shipped unburnished.
- Brake coupling armature assembly is secured to shaft by (2) set screws and key.
- Metric bores available