

BDSC Series

Bi-Directional Slip Clutch

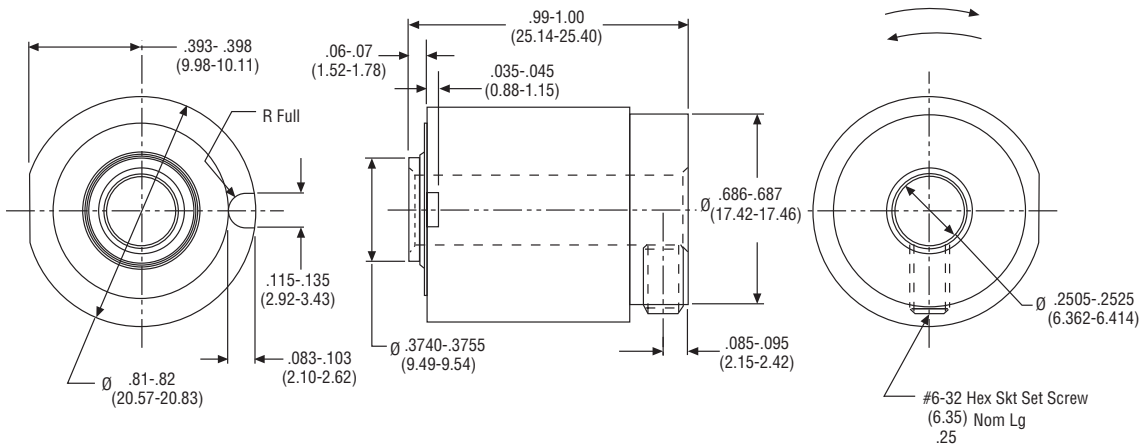
The BDSC clutch is a customer driven, special unit designed for high volume usage. It consists of just four components: one snap ring, two hubs and one spring. Like the CTS series, these clutches are designed to slip whenever a preset torque limit is exceeded. Torque ratings range from 2 to 32 in.-oz.

By attaching various pulleys, sprockets and other input devices, BDSC clutches are easily adapted for a wide variety of applications.

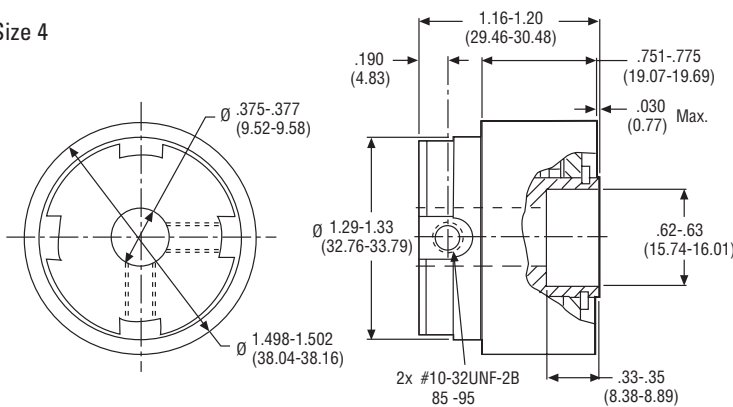
- Low cost design
- Custom configurations
- Torque ratings from 2 in.oz. to 30 oz.in.
- 200 RPM maximum speed
- Suitable for 100% duty cycle
- Torque can be varied with direction of rotation
- Low cost
- RoHS compliant



Size 2



Size 4



Typical Applications

- Turntable drives
- Machine doors
- Conveyor drive systems for poly film bag manufacturing
- Gear boxes
- Servo systems
- Tension devices
- Ribbon winding
- Paper feed

Dimensions (mm)

PERFORMANCE	
Torque ratings	2 in-oz to 9 lb-in (.014–1.017 Nm) – Torques held within $\pm 10\%$ – Can provide different torques in different directions – 25 in-oz CW, 5 in-oz CCW
Bore Sizes	English: .25-.625 inch (6.35-15.88 mm) Metric: .2362-.629 inch (6-16 mm)
Weight	1.0 lb.